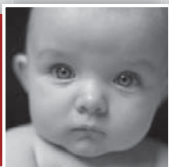
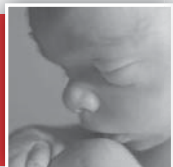


*"I set before you life and death . . ." Deuteronomy 30:19*



**U.S. Senate - Kansas  
COMPARE. DECIDE. VOTE.**

## ***Where Do these Candidates Stand on Life?***

### **Pat Roberts**

### **Greg Orman**

#### **Abortion**

**Pat Roberts** is pro-life. He opposes abortion on demand, and supports protection for unborn children. Pat Roberts is a co-sponsor of the Pain-Capable Unborn Child Protection Act (S. 1670), the bill to protect unborn children from abortion after 20 weeks, when they are capable of experiencing excruciating pain during abortions.

**Greg Orman** supports a policy of abortion on demand, which allows abortion for any reason.

#### **Obamacare Health Care Law**

**Pat Roberts** voted against the Obamacare law, which provides government funding for insurance plans that pay for abortion on demand, and will lead to the rationing of lifesaving medical treatments. He is committed to help reverse the abortion-expanding and rationing effects of that law.

**Greg Orman** supports Obamacare, which provides government funding for insurance plans that pay for abortion on demand, and will lead to the rationing of lifesaving medical treatments.

#### **Conscience Rights**

**Pat Roberts** voted against a bill to further empower the Obama Administration to mandate coverage of the abortion pill RU-486, surgical abortion (including late abortions), or anything else it chooses to classify as "preventive services," overriding all existing federal laws that protect religious freedom and conscience rights (S. 2578, 7/16/14, Roll Call No. 228).

**Greg Orman** opposed the Supreme Court decision which upheld the right of family-owned businesses to not purchase insurance coverage for drugs and devices that violate their religious and moral beliefs.

***Please copy and distribute freely or download a copy at [www.nrlc.org](http://www.nrlc.org).***



**national RIGHT TO LIFE**

512 10th Street NW Washington, DC 20004 • 202-626-8800

